

Mouldmed House,  
 Marais Crescent, Durbanville  
 P O Box 1382 Durbanville 7551  
 Tel +27 21 975-1170  
 Fax +27 21 975-2108  
 E-mail: henry@mouldmed.co.za



MOULDPROD LTD

## CTS-800

Palm-size veterinary ultrasound



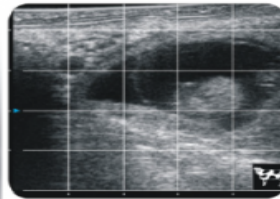
- Compact design & easy operation
- Water proof for outdoor operation
- Gravity sensor for layout change
- Livestock pregnancy detection



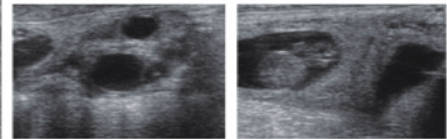
Different Layout

### Specifications:

- Monitor: 7-inch LCD
- Weight: 0.8 kg
- Environmental Rating: Ip64 (main unit)  
IP67 (probe head)
- Probe: L65/5.0 MHz linear rectal probe (Standard)  
L50/7.5MHz linear rectal probe (Optional)  
R20/5.0 MHz micro convex probe (Optional)  
R60/3.5 MHz convex probe (Optional)
- Battery: 2.5-3 hours operating time
- Display Mode: B, 2B, ZOOM B, B/M, M
- Depth: Up to 250mm
- B Gain: 0-100
- Image Storage: 256 frames
- Cine Loop: 256 frames
- Image Layout: Gravity sensor for layout change (transverse/vertical)
- Measurement: Distance, area, circumference, volume, angle, heart rate
- Software & Report: Backfat, eyerib area, Rump fat and reproductive



Grid for Estimation



### Configuration

- Main unit, 7-inch LCD monitor
- 1 probe connector
- 1 Li-ion battery
- 1 Adaptor
- 1 car charger
- Belt and sun shield
- 1 USB port (Mini)
- Carry Case
- B, 2B, M, B/M, ZOOM B
- 16 frames non-volatile image store capacity

### Package price

Linear rectal probe L7FVC (6.5/7.1/7.5/8.3/9.0MHz)



### Optional

#### Transducers

- Linear rectal probe L5FVC(4.0/4.7/5.0/5.5/6.2MHz)
- Linear Backfat probe L3FC (2.5/3.0/3.5/4.2/5.0MHz)
- Microconvex probe C3FC (2.5/3.0/3.5/4.0/5.0MHz)
- Microconvex probe C5FC(3.5/4.0/5.0/6.5/7.1MHz)

#### Software

DICOM 3.0

#### Accessories

- Video Glasses CLIPon 600 and accessory
- LI-ion battery

Give us a call today for full product information and proposal. We look forward to receive your call!

Best regards

**Henry Kruger**

Director Tel. 021- 975 1170 Fax. 021 – 975 2108 E-mail: [henry@mouldmed.co.za](mailto:henry@mouldmed.co.za)